

“We Serve  
More Than  
Sydney But  
Australia”



Headquarters: 36 Amax Avenue, Girraween, NSW, 2145  
Queensland Branch: 14 Annie St, Coopers Plains, QLD, 4108

General Enquiry: [sales@ozcovey.com.au](mailto:sales@ozcovey.com.au)  
Queensland Branch: [salesqld@ozcovey.com.au](mailto:salesqld@ozcovey.com.au)  
Land Line: 02 8667 6007  
Mobile: 0415 734 731  
Website: [www.ozcovey.com.au](http://www.ozcovey.com.au)



“Crafting Your Perfect Shower  
into a Ritual of Comfort”



## ABOUT US

Covey Australia is dedicated to providing top-quality shower screens and installation services to our customers, with local stocks in Girraween, Sydney, and Coopers Plains, Queensland. With thousands of sizes and the most comprehensive color options available, we aim to meet your needs for modern and stylish shower screen designs and renovations.

With years of experience in the industry, we have established ourselves as a trusted partner for bathroom suppliers in Sydney and are gradually expanding our services nationwide across Australia. Over the past decade, Covey Australia has been professionally serving our customers, and we highly appreciate the support from our valued Clients. Moving forward, the Covey team will continue to offer brilliant products and exceptional installation services.

- Frameless Shower Screens
- Semi-frameless Shower Screens
- Single Panel Shower Screens
- Bathtub Screens
- Custom Shower Screens

Covey Australia currently offers multiple shipping options for all shower screens and fittings across Australia. More details can be found in our Delivery Terms.

- Retailers Delivery
  - Residences Delivery
- Couriers Delivery
  - Customer Pickup
- Installation Delivery



DELIVERY

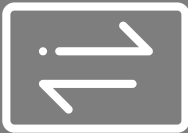
Covey Australia’s delivery turnaround time for standard products is 3-7 business days if the purchased items are in stock. For custom-ized products, delivery takes 7-10 business days from the receipt of the final updated order with job onsite measurements confirmed by clients. For remote locations, please contact our sales team for more information and to reach an agreement. For additional details, please refer to our Delivery Terms.



LEAD TIME

Covey Australia is dedicated to providing our clients with strong support for our products, services, and markets. Our 30-day return policy allows you to return or exchange items within this period. Items must be in their original packaging and condition, subject to inspection by Covey Australia staff. If 30 days have passed since your purchase, a refund or exchange may not be granted.

To be eligible for a return, your item must be unused, in the same condition that you received it, and in the original packaging. Please note that a restocking fee or repacking fee will apply to any return or exchange procedures. Damaged items, missing parts, nano-coat-ing, delivery costs, and extra handling costs are not refundable. For more details, please refer to our Return Policy.



RETURN

CONTENTS

1	CVP031	Frameless Single Sliding Door	P9-P10
2	DS03	Frameless Bypass Sliding Door	P11-P12
3	CVP062	Frameless Corner/W2W Hinge Door	P13-P14
4	CVP063	Frameless Diamond Hinge Door	P15-P16
5	NC021	Semi-Frame Bi-Fold Swing Door	P18
6	NC004	Semi-Frame Corner Frame Pivot Door	P19
7	PC026	Semi-Frame Diamond Pivot Door	P20
8	PC025	Semi-Frame Corner/W2W Pivot Door	P21-P22
9	PC47S	Semi-Frame Corner Double Sliding Door	P23-P24
10	PC07D	Semi-Frame Single Sliding Door	P25-P26
11	NC046	Semi-Frame Curved Sliding Door	P27
12	PC036	Semi-Frame Triple Sliding Door	P28
13	PCH47S	Semi-frame Horizontal Double Sliding Door	P29
14	CVP007	Clear Glass Single Panel WB	P31-P32
15	CVP007G	Tinted Glass Single Panel WB	P33
16	CVP01F	Frosted Glas Single Panel WB	P34
17	CVP011	Wall channel Single Panel WC	P35
18	CVP012	Gradient Glass Single Panel WC	P36
19	CVP017A/CVP017NL/CVP017NR	Curved Corner Single Panel UB	P37
20	CVP018	Fluted Glass Single Panel WB	P38
21	CVP019	Bend Glass Single Panel WB	P39
22	CVP022A/CVP022N	Top Arch Single Panel UB	P40
23	NC006	15 Printed Grills Glass Panel	P42
24	NC001	Clear Glass Panel with Support Bar	P43
25	NC005	Clear Glass Panel without Support Bar	P44
26	NC002	8 Printed Grills Glass Panel	P45
27	NC003	6 Printed Grills Glass Panel	P46
28	CVP032	Single Sliding Bathtub Screen	P48
29	NC008	Grills Fixed Bathtub Screen	P49
30	CVP008	Fixed Bathtub Screen	P50
31	NC009	Single Swing Bathtub Screen	P51
32	NC010	Double Swing Bathtub Screen	P52
33	CVP006	Double Hinged Bathtub Screen	P53



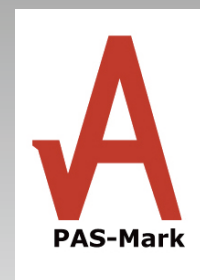


Covey Australia is a One-stop shower screens and building glass related supplier. We design, measure, supply, delivery and install shower screens professionally with a local team. We offer multiple fitting options to satisfy diversified customers' needs, we have both standard and customizable diversified glass type options such as Clear glass, Ultra clear glass, Tinted Grey glass, Fluted glass also known as narrow line glass, Frosted glass as well named Matelux glass. Moreover, All our products are available to be come with Nano coating service under EnduroShield's certified warranty.

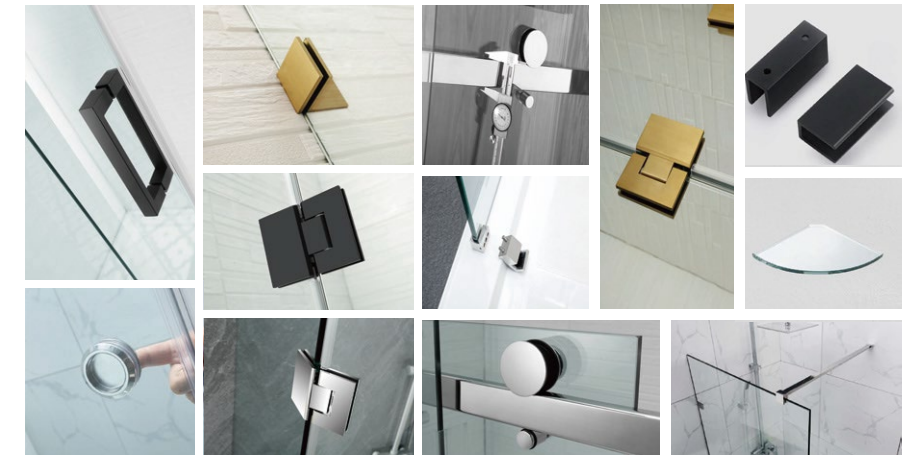
NO shower base is included in all shower screen products, photos on this brochure are for marketing reference only



Australian Standard



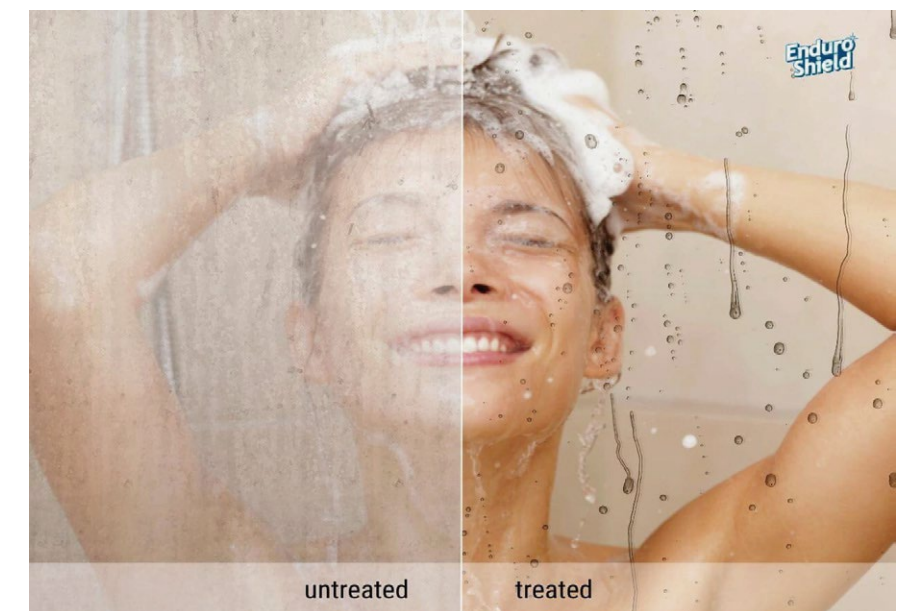
## Fittings Options



## Glass Options



## Nano Coating Services





## WARRANTY COVERAGE



This warranty provides coverage for 5 years on glass, 2 years on metal fittings, and 1 year on plastic parts, effective for all transactions from August 1, 2024. Proper maintenance is essential to prolong the life of the product and to maintain the rights stated within this warranty. The care and maintenance instructions must be followed to ensure eligibility for any warranty claims.

This warranty is non-transferable and covers only the original purchaser of the product. The original purchaser must provide proof of purchase, product certification issued by Covey Australia, and evidence of installation by a licensed glazier to facilitate any claims. Covey Australia will NOT be responsible for any DIY (Do It Yourself) installations of our shower screens. This warranty applies to all Covey Australia shower screen products.

## MAINTAINANCE

### FOR HINGES AND GLASS MOUNTING BRACKETS

Regular maintenance of your screen hinges and fittings is necessary to keep them functioning smoothly. Every 3-6 months:

- Check that all screws on the hinges and glass mounting brackets are firmly secured; tighten any screws that you find have loosened.
- Clean any dirt build up with warm water and a small amount of dish washing liquid, be sure to rinse well and pat dry with a clean cloth.
- Use a few drops of machine oil to lubricate moving parts of the hinges

### CLEANING & CARING YOUR SHOWER SCREEN

NOTE: Wiping the glass dry with a microfiber cloth and/ or using a squeegee after showering will help limit scum build ups on glass and reduce the need for heavier cleaning.

- When cleaning your shower screen, only use products specifically designed for shower screens and follow the product instructions for best results.
- Alternatively, you can make an effective cleaner by mixing 1 part white vinegar to 10 parts water. Spray or sponge the vinegar mixture on the glass, then wipe and buff dry with a soft, lint-free cloth.

### IMPORTANT

- Failure to follow the care and maintenance instructions on this page may void all warranties.
- Do not use blades, metal scrapers, abrasive cloths/sponges, steel wool, or abrasive or acid cleaners on any part of your shower screen.
- Do not allow cleaning agents or liquids, including water, to remain in contact with the glass or frames for long periods



“  
Frameless  
Collection”



CVP031

Frameless Single Sliding Door

Without a visible frame or border around the glass, the CVP031 model features a frame-less sliding design. The glass is attached to the wall and floor using specialized clips, rollers, and a strong railing bar, creating a sleek, minimalist, seamless, and streamlined look. This aesthetically pleasing design can increase the sense of space in the shower area.



Chrome



Matt Black



Brushed Nickel



Gun Metal



Brushed Gold



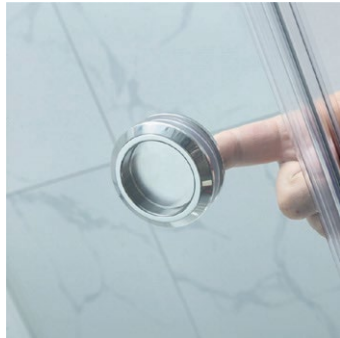
Light Gold

Features:

- Made from Australian Standard 10mm tempered glass and #304 stainless steel fitting
- Fitting finishes colors available with 6 colors refer to Color Option
- Nano- Coating is optional with extra charge (Treatment is applied on one-side glass)
- Standard Height 2000mm H
- Customization is available
- Can be installed as L Shape or Wall to Wall/Inline Direction
- Normal Wall channel allows 10mm and 45mm wall channels allows 25mm for out-of-plumb wall adjustment
- Reversible installation is available



Tinted Glass L Shape



TECHNICAL PARAMETERS

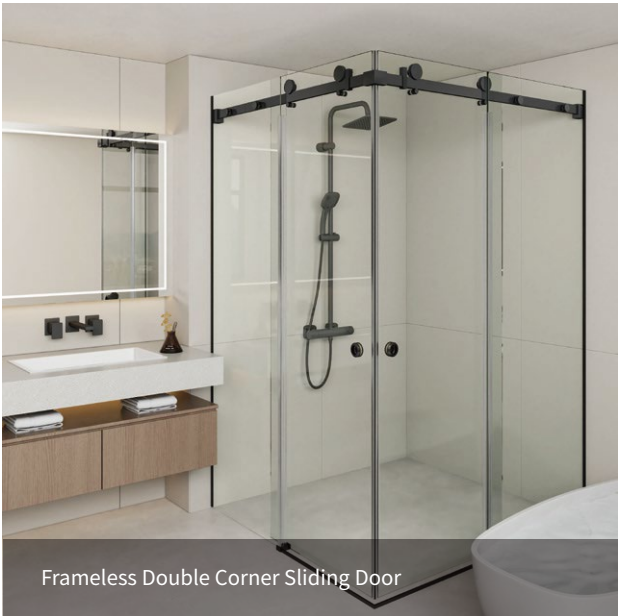
NO	PICTURES	NAME	SKU	SIZES(MM)	Door Glass (mm)	Fixed Glass (mm)	Min Open Space (mm)	Max Open Space (mm)	REMARKS
1		Front Door (Wall To Wall)	CVP031W2W870	870-890	435mm	455mm	420mm	440mm	Round Handle
2			CVP031W2W890	890-910	453mm	455mm	430mm	450mm	
3			CVP031W2W910	910-950	473mm	475mm	430mm	460mm	
4			CVP031W2W950	950-1000	503mm	502mm	440mm	490mm	
5			CVP031W2W1000	1000-1050	528mm	527mm	462mm	517mm	
6			CVP031W2W1050	1050-1130	570mm	567mm	470mm	550mm	
7		Front Door (Wall To Wall)	CVP031W2W1130	1130-1180	620mm	567mm	500mm	555mm	Square Handle   Tinted Glass Available
8			CVP031W2W1180	1180-1230	670mm	567mm	500mm	555mm	
9			CVP031W2W1230	1230-1300	694mm	617mm	526mm	601mm	
10			CVP031W2W1300	1300-1450	769mm	692mm	521mm	676mm	
11			CVP031W2W1450	1450-1650	869mm	792mm	571mm	776mm	
12			CVP031W2W1650	1650-1800	944mm	867mm	696mm	851mm	
13			CVP031W2W1800	1800-2000	944mm	1067mm	673mm	878mm	Square Handle

NO	PICTURES	NAME	SKU	SIZES(MM)	Fixed Glass (mm)	Door Glass (mm)	Fixed Glass (mm)	Min Open Space (mm)	Max Open Space (mm)	REMARKS
14		Front Door (wall to wall 3 panels)	CVP031W2W3P1420	1400-2000	Provide exact measurements to supplier to check sizes combination of each glass panel					Listed glass sizes are recommended sizes for standard delivery, if any other sizes required please check and mention requirements to supplier for different Combination.
15			CVP031W2W3P2000	2000-2050	617mm	769mm	692mm	621mm	671mm	
16			CVP031W2W3P2050	2050-2100	692mm	769mm	692mm	596mm	646mm	
17			CVP031W2W3P2100	2100-2150	692mm	769mm	692mm	646mm	696mm	
18			CVP031W2W3P2150	2150-2200	567mm	869mm	792mm	721mm	771mm	
19			CVP031W2W3P2200	2200-2250	617mm	869mm	792mm	721mm	771mm	
20			CVP031W2W3P2250	2250-2300	692mm	869mm	792mm	696mm	746mm	
21			CVP031W2W3P2300	2300-2350	692mm	869mm	792mm	746mm	796mm	
22			CVP031W2W3P2350	2350-2400	792mm	869mm	792mm	696mm	746mm	
23			CVP031W2W3P2400	2400-2450	792mm	869mm	792mm	746mm	796mm	
24			CVP031W2W3P2450	2450-2530	792mm	944mm	867mm	721mm	801mm	

NO	PICTURES	NAME	SKU	SIZES(MM)	REMARKS (Standard wall channel is 18mm W, Wider wall channel is 45mm W)
25		Return Panel	CVP031RP800	800mm	Standard Max Install to be 810mm, Wider Max Install to be 825mm
26			CVP031RP850	850mm	Standard Max Install to be 860mm, Wider Max Install to be 875mm
27			CVP031RP900	900mm	Standard Max Install to be 900mm, Wider Max Install to be 925mm   Tinted Glass Available
28			CVP031RP950	950mm	Standard Max Install to be 960mm, Wider Max Install to be 975mm
29			CVP031RP1000	1000mm	Standard Max Install to be 1010mm, Wider Max Install to be 1025mm   Tinted Glass Available
30			CVP031RP1050	1050mm	Standard Max Install to be 1060mm, Wider Max Install to be 1075mm
31			CVP031RP1100	1100mm	Standard Max Install to be 1110mm, Wider Max Install to be 1125mm
32			CVP031RP1150	1150mm	Standard Max Install to be 1160mm, Wider Max Install to be 1175mm
33			CVP031RP1200	1200mm	Standard Max Install to be 1210mm, Wider Max Install to be 1225mm



3 Panel Slider



Frameless Double Corner Sliding Door



DS03

Frameless Bypass  
Sliding Door



Featuring 10mm frameless tempered tough-ened glass, DS03 is designed with double sliding doors that move from both sides. The glass is secured to the wall using specialized wall channels, rollers, and a strong railing bar, resulting in a sleek, minimalist, seamless, and streamlined appearance. This aesthetically pleasing design not only enhances the sense of space in the shower area but also provides convenient access from both sides.



Chrome



Matt Black

Features:

- Made from Australian Standard 10mm tempered glass and #304 stainless steel fitting materials
- Fitting finishes colors available with Chrome and Black
- Standard Height 2000mm H
- Customization is available
- Nano- Coating is optional with extra charge (Treatment is applied on one-side glass)
- Can be installed as Wall to Wall
- Wall channel allows 10mm for out-of-plumb wall adjustment
- Reversible installation is available



High quality #304 Stainless steel roller rails and wheels with easy-glide rubber, guarantee for soft closing with silence and smooth



TECHNICAL PARAMETERS

NO	PICTURES	SKU	SIZES	Min Open Space (mm)	Max Open Space (mm)	REMARKS
1		DS031180	1180-1300 (W2W)	505mm	625mm	Wall to Wall Only
2		DS031300	1300-1450 (W2W)	550mm	700mm	Wall to Wall Only
3		DS031450	1450-1650 (W2W)	600mm	800mm	Wall to Wall Only
4		DS031650	1650-1800 (W2W)	725mm	875mm	Wall to Wall Only



High quality #304 Stainless steel Bottom door guide to be fixed on the floor, secure the door stability whereas long term movement, with #304 Stainless steel round edge handle on both door glass panel, easy open from outside and inside





CVP062

Frameless Corner/W2W Hinge Door

The frameless design hinge-open shower screen uses hidden hinges to attach the glass to the wall without frames. The concealed hinges create a clean, contemporary, and streamlined appearance. Frameless hinge doors offer a stylish and modern solution, enhancing the aesthetic appeal of any space. With more than 700 standard sizes available and multiple fitting colors to choose from, you can easily find the perfect fit for your needs.





Chrome



Matt Black



Brushed Nickel



Gun Metal



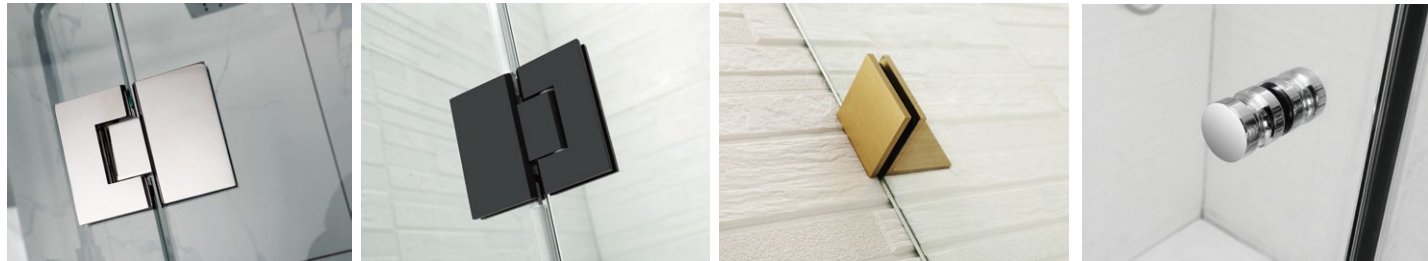
Brushed Gold

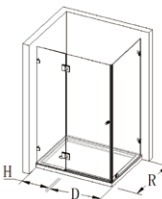
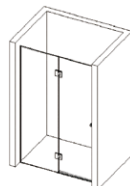
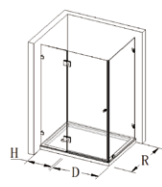

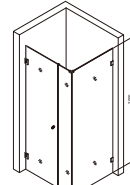

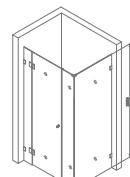


Light Gold

Features:

- Made from Australian Standard 10mm tempered glass and High Quality Brass fitting materials
- Inward & Outward Swing Opening available
- Fitting finishes colors available with 6 colors refer to Color Option
- Standard Height 2000mm H
- Customization is available
- Nano-coating is optional for all glass with extra charge
- Can be installed as L Shape or Wall to Wall/Inline Direction
- Reversible installation is available



TECHNICAL PARAMETERS								
NO	PICTURES	NAME	SKU	SIZES(MM)	DOOR(mm)	HINGE(mm)	FIXED(mm)	CONFIGURATION
1		Square Hinge Shower	CVP0628080	800x800	530mm	250mm	800mm	2x 180° G2G Hinges 4x 90° Brackets 1x Knob 1x Water Bar 1x Hinge Panel 1x Door Panel 1x Fixed Panel 1x plastic strips (optional to install)
2			CVP0628585	850x850	580mm	250mm	850mm	
3			CVP0629090	900x900	630mm	250mm	900mm	
4			CVP0629595	950x950	630mm	300mm	950mm	
5			CVP0621010	1000x1000	630mm	350mm	1000mm	
6			CVP0621111	1100x1100	630mm	450mm	1100mm	
7			CVP0621212	1200x1200	630mm	550mm	1200mm	
8		Hinge Door (Wall To Wall)	CVP062HD+Sizes Eg: CVP062HDI350	Min Size	685mm	<ul style="list-style-type: none"><li>● Hinge Panel sizes from 150- 700mm</li><li>● Door Panel sizes from 520- 700mm</li></ul>		2x 180° G2G Hinges 2x 90° Brackets 1x Knob 1x Water Bar 1x Hinge Panel 1x Door Panel 1x plastic strips (optional to install)
9				Max Size	1400mm			
10		Hinge Door L Shape	CVP062HDF+Sizes Eg:CVP062HDF1000D900F	Hinge Door Side Min Size	690mm	<ul style="list-style-type: none"><li>● Hinge Panel sizes from 150 - 700mm</li><li>● Door Panel sizes from 520- 700mm</li><li>● Fixed Panel sizes from 200 - 1200mm</li></ul>		2x 180° G2G Hinges 4x 90° Brackets 1x Knob 1x Water Bar 1x Hinge Panel 1x Door Panel 1x Fixed Panel 1x plastic strips (optional to install)
11				Hinge Door Side Max Size	1420mm			
12		Wall Hung Door (Wall To Wall)	CVP062DF+Sizes Eg:CVP062DFI000	Min Size	530mm	<ul style="list-style-type: none"><li>● Door Panel sizes from 520- 700mm</li><li>● Fixed Panel sizes from 200- 1200mm</li></ul>		2x 90° G2W Hinges 2x 90° Brackets 1x Knob 1x Water Bar 1x Door Panel 1x Fixed Panel 1x plastic strips (optional to install)
13				Max Size	1910mm			
14		Wall Hung L Shape	CVP062DCF+Sizes Eg:CVP062DCF1000D900F	Wall Hung Door Side Min Size	540mm	<ul style="list-style-type: none"><li>● Door Panel sizes from 520- 700mm</li><li>● Corner Panel sizes available at 300mm &amp; 500mm</li><li>● Fixed Panel sizes from 200- 1200mm</li></ul>		2x 90° G2W Hinges 2x 90° Brackets 1x Knob 1x Top Corner Connector 1x U bracket 1x Water Bar 1x Door Panel 1x Corner Panel 1x Fixed Panel 1x plastic strips (optional to install)
15				Wall Hung Door Side Max Size	1220mm			
16		3-Panel Hinge Door (Wall to Wall)	CVP062HDF3P+Sizes Eg: CVP062HDF3PI500	Min Size	1040mm	<ul style="list-style-type: none"><li>● Hinge Panel sizes from 150- 700mm</li><li>● Door Panel sizes from 520- 700mm</li><li>● Fixed Panel sizes from 200 - 1200mm</li></ul>		2x 180° G2G Hinges 4x 90° Brackets 1x Knob 1x Water Bar 1x Hinge Panel 1x Door Panel 1x Fixed Panel 1x plastic strips (optional to install)
17				Max Size	2600mm			
18		3-Panel Hinge Door L Shape	CVP062HDCF+Sizes Eg: CVP062HDCF1500D900F	3-Panel Hinge Door Side Min Size	990mm	<ul style="list-style-type: none"><li>● Hinge Panel sizes from 150- 700mm</li><li>● Door Panel sizes from 520- 700mm</li><li>● Corner Panel sizes available at 300mm &amp; 500mm</li><li>● Fixed Panel sizes from 200 - 1200mm</li></ul>		2x 180° G2G Hinges 4x 90° Brackets 1x Knob 1x Top Corner Connector 1x U bracket 1x Water Bar 1x Hinge Panel 1x Door Panel 1x Corner Panel 1x Fixed Panel 1x plastic strips (optional to install)
19				3-Panel Hinge Door Side Max Size	1920mm			





# CVP063

## Frameless Diamond Hinge Door

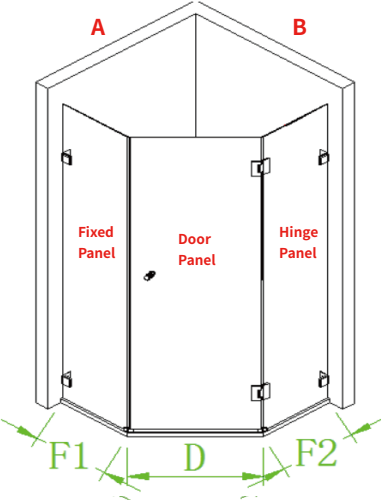
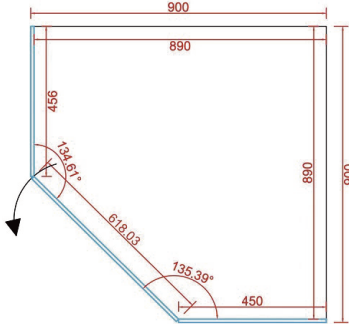
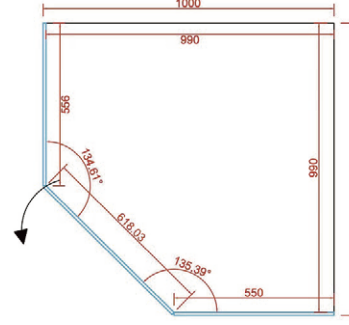
The frameless diamond-shaped shower screen features a modern design that is perfect for any bathroom with limited space. High-quality Brass Mickey Mouse hinges are designed to withstand heavy use and provide long-lasting performance. The frameless diamond shower screen is a great addition to any bathroom, offering a sleek, modern look and easy-to-clean, durable materials.

- **Chrome**
- **Matt Black**
- **Brushed Nickel**
- **Gun Metal**
- **Brushed Gold**
- **Light Gold**

### Features:

- Made from Australian Standard 10mm tempered glass and High Quality Brass fitting materials
- Fitting finishes colors available with 6 colors refer to Color Option
- Standard Height 2000mm H
- Customization is available
- Nano- Coating is optional with extra charge (Treatment is applied on one-side glass)
- Magnetic strip to be installed between door panel and fix panel to prevent water leaking
- Exact floor angle dimensions are available to provide for drawing
- Reversible installation is available



TECHNICAL PARAMETERS FOR FLOORS/TILES ANGLE							
NO	PICTURES	SKU	EXTERNAL SIZE	INTERNAL SIZES			REMARKS
				HINGE	FIXED	DOOR	
1		CVP0638080	800x800	400mm	406mm	550mm	
2		CVP0638181	810x810	400mm	406mm	560mm	
3		CVP0638282	820x820	400mm	406mm	580mm	
4		CVP0638383	830x830	400mm	406mm	590mm	
5		CVP0638484	840x840	400mm	406mm	600mm	
6		CVP0638585	850x850	400mm	406mm	620mm	
7		CVP0638686	860x860	400mm	406mm	630mm	
8		CVP0638787	870x870	400mm	406mm	645mm	
9		CVP0638888	880x880	450mm	456mm	585mm	
10		CVP0638989	890x890	450mm	456mm	600mm	
11		CVP0639090	900x900	450mm	456mm	615mm	
12		CVP0639191	910x910	450mm	456mm	630mm	Listed sizes
13		CVP0639292	920x920	450mm	456mm	645mm	are for
14		CVP0639393	930x930	450mm	456mm	660mm	standard
15		CVP0639494	940x940	500mm	506mm	600mm	sizes, if any
16		CVP0639595	950x950	500mm	506mm	615mm	irregular sizes
17		CVP0639696	960x960	500mm	506mm	630mm	such as
18		CVP0639797	970x970	500mm	506mm	645mm	1200*1000mm
19		CVP0639898	980x980	500mm	506mm	660mm	needed,
20		CVP0639999	990x990	550mm	556mm	600mm	please
21		CVP0631010	1000x1000	550mm	556mm	615mm	contact
22		CVP063101101	1010x1010	550mm	556mm	630mm	supplier for
23		CVP063102102	1020x1020	550mm	556mm	645mm	glass
24		CVP063103103	1030x1030	550mm	556mm	660mm	Combination
25		CVP063104104	1040x1040	600mm	606mm	600mm	enquiries.
26		CVP063105105	1050x1050	600mm	606mm	615mm	
27		CVP063106106	1060x1060	600mm	606mm	630mm	
28		CVP063107107	1070x1070	600mm	606mm	645mm	
29		CVP063108108	1080x1080	600mm	606mm	660mm	
30		CVP063109109	1090x1090	650mm	656mm	600mm	
31		CVP063110110	1100x1100	650mm	656mm	615mm	
32		CVP063111111	1110x1110	650mm	656mm	630mm	
33		CVP063112112	1120x1120	650mm	656mm	645mm	
34		CVP063113113	1130x1130	650mm	656mm	660mm	
35		CVP063114114	1140x1140	650mm	656mm	670mm	
36		CVP063115115	1150x1150	650mm	656mm	685mm	
37		CVP063116116	1160x1160	700mm	706mm	635mm	
38		CVP063117117	1170x1170	700mm	706mm	650mm	
39		CVP063118118	1180x1180	700mm	706mm	660mm	
40		CVP063119119	1190x1190	700mm	706mm	670mm	
41		CVP063120120	1200x1200	700mm	706mm	680mm	
42		CVP063121121	1210x1210	700mm	706mm	695mm	



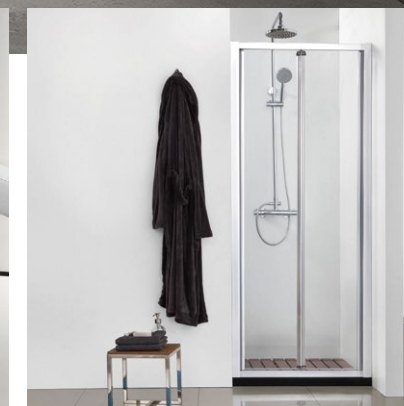
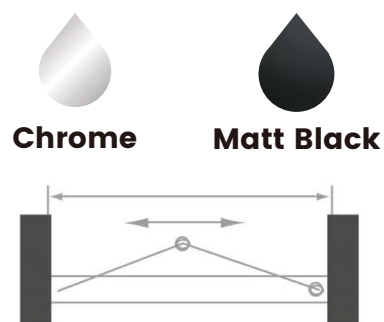


# “Semi-Frameless Collection”



NC021

Semi-Frame  
Bi-Fold Swing Door



## TECHNICAL PARAMETERS

NO	PICTURES	NAME	SKU	SIZES(MM)	ENTRANCE SPACE(MM)	REMARKS
1			NC021W2W700	700-740	500mm	<ul style="list-style-type: none"><li>● Australian Standard Clear 6mm Tempered Toughen Glass</li><li>● Door can open inward and outward</li><li>● Standard Height is 2000mm H</li><li>● 40mm extension is available by adding 20mm extension frame at both side of wall</li><li>● Nano- Coating is optional with extra charge (Treatment is applied on one-side glass)</li><li>● Install is reversible to open right side or left side</li><li>● Customization is not available</li></ul>
2		Front Door (Wall To Wall)	NC021W2W740	740-780	540mm	
3			NC021W2W780	780-820	580mm	



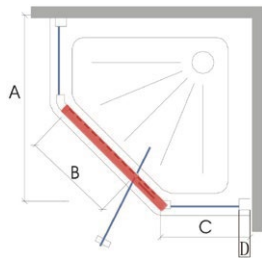


Matt Black

TECHNICAL PARAMETERS						
NO	PICTURES	NAME	SKU	SIZES(MM)	PANELS	REMARKS
1			NC004D900	900mm	Door Only	• Australian Standard 8mm Tempered Toughen Glass with Black Printing Grills
2		Front Door	NC004DI000	1000mm	Door Only	• Nano- Coating is optional with extra charge (Treatment is applied on one-side glass)
3		Return Panel	NC004RP900	900 (RP)	Return Panel	• Fully frame pivot door
4			NC004RP1000	1000 (RP)	Return Panel	• Standard height is 2000mm • Customization is Not available



PC Hinge



B=500mm (Open Space)



Chrome



Matt Black

TECHNICAL PARAMETERS								
NO	PICTURES	NAME	SKU	SIZES(MM)	ADJUSTMENT RANGE (MM)	DOOR PANEL (MM)	SIDE PANEL (MM)	REMARKS
1		Diamond Shower	PC0269090	900*900	890-910mm	638mm	437-457mm	• Australian Standard 6mm Clear Tempered Toughen Glass • Standard Height 2000mm H • Nano- Coating is optional with extra charge (Treatment is applied on one-side glass) • Install is reversible to open right side or left side • Customized is acceptable with Austrlian local extrusion system
2		Screen	PC0261010	1000*1000	890-910mm	638mm	537-557mm	





## PC025

Semi-Frame  
Corner/W2W  
Pivot Door

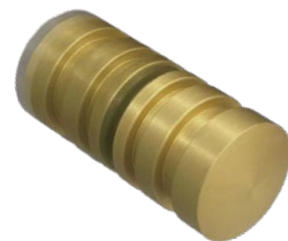
### Features

- Pivot- Opening Swing screen
- #6463 High durability aluminum extrusions
- Frame style for Wall to Wall/ L Shape are available
- Australian Standard Tempered/Toughen glass
- 20mm Wall channel adjustment each side to adapt with un-plumbing walls
- Standard Height is 2000mm H
- Nano-Coating is optional with extra charge (Treatment is applied on one-side glass)
- Install is reversible to open right side or left side
- Customization is available with Australian local extrusion system



PC Series Knob

For Chrome, Black frames,  
PC Series Knobs are applied.



NC Series Knob

For Brush Nickel, Gun Metal,  
Light Gold frames, NC Series  
Knobs are applied.

### TECHNICAL PARAMETERS

NO	PICTURES	NAME	SKU	SIZES(MM)	CHROME	FRAME COLORS				ENTRANCE SPACE (MM)
						BLACK	BRUSH NICKEL	GUN METAL	LIGHT GOLD	
1		Front Door (Wall To Wall)	PC025W2W700	700-800	●	●	-	-	-	450mm
2			PC025W2W780	780-910	●	●	-	-	-	500mm
3			PC025W2W850	850-950	-	-	●	●	●	515mm
4			PC025W2W890	890-1020	●	●	-	-	-	545mm
5			PC025W2W950	950-1050	-	-	●	●	●	515mm
6			PC025W2W1000	1000-1170	●	●	-	-	-	545mm
7			PC025W2W1050	1050-1150	-	-	●	●	●	565mm
8			PC025W2W1150	1150-1320	●	●	-	-	-	545mm
9			PC025W2W1300	1300-1470	●	●	-	-	-	545mm
10		Return Panel	PC025RP800	790-810	●	●	-	-	-	-
11			PC025RP850	840-860	●	●	-	-	-	-
12			PC025RP900	890-910	●	●	●	●	●	-
13			PC025RP950	940-960	●	●	-	-	-	-
14			PC025RP1000	990-1010	●	●	●	●	●	-
15			PC025RP1050	1040-1060	●	●	-	-	-	-
16			PC025RP1100	1090-1110	●	●	-	-	-	-
17			PC025RP1150	1140-1160	●	●	-	-	-	-
18			PC025RP1200	1190-1210	●	●	-	-	-	-



Chrome



Matt Black



Brushed Nickel



Gun Metal



Light Gold

Semi-frameless shower screens offer a balance between style, functionality, and affordability. They are a popular choice for many homeowners in a limited room, as they provide a luxurious look without the high cost of fully frameless shower screens. Outward swing pivot doors allow to install as corner shape as well as wall to wall from a small size at 700mm to 1320mm wide. It's a perfect choice for limited space while there's a wider entrance opening space needed.





# PC47S

Semi-Frame Corner  
Double Sliding Door



Chrome



Matt Black



Brushed Nickel



Gun Metal



Light Gold

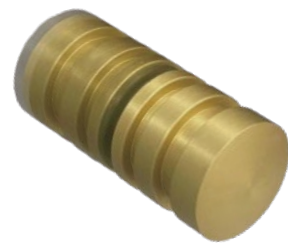
## Features:

- Made from Australian Standard 6mm tempered glass and #6463 High Quality Aluminum materials
- Frame finish colors are available with Chrome, Matt Black, Brush Nickel, Gun Metal and Light Gold
- Standard Height 2000mm H
- Nano- Coating is optional with extra charge (Treatment is applied on one-side glass)
- Can be installed as different size combinations such 1000\*800mm or 900\*1200mm
- Wall channel allows 20mm for out-of-plumb wall adjustment
- Reversible installation is available



PC Series Knob

For Chrome, Black Frames



NC Series Knob

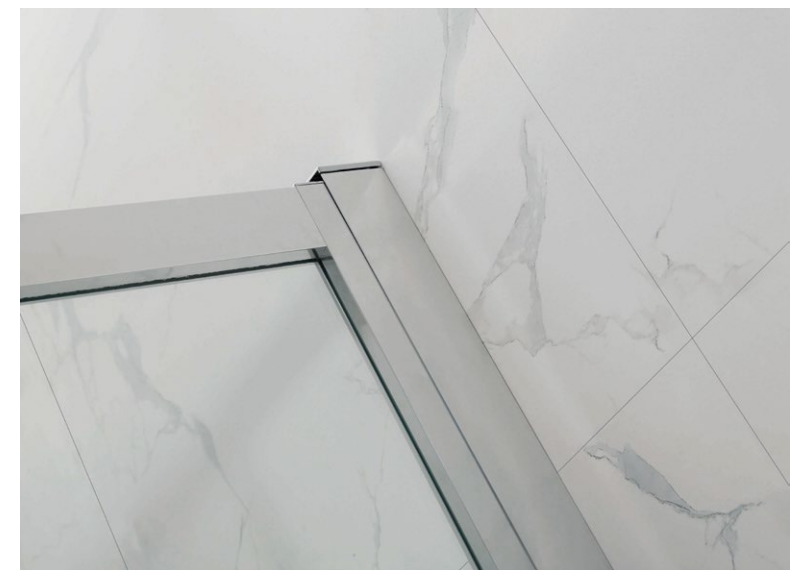
For Brush Nickel, Gun Metal,  
Light Gold Frames

## TECHNICAL PARAMETERS

NO	PICTURES	SKU	LEFT SIDE (MM)	RIGHT SIDE (MM)	ADJUSTMENT (MM)	CORNER OPEN SPACE(MM)	HALF OPEN SPACE(MM)	REMARKS
1		PC47S800	800 HALF	800 HALF	790-815mm	436mm	320mm	
2		PC47S850	850 HALF	850 HALF	840-865mm	472mm	325mm	
3		PC47S900	900 HALF	900 HALF	890-915mm	507mm	350mm	
4		PC47S950	950 HALF	950 HALF	940-965mm	543mm	375mm	
5		PC47S1000	1000 HALF	1000 HALF	990-1015mm	578mm	400mm	
6		PC47S1050	1050 HALF	1050 HALF	1040-1065mm	613mm	425mm	
7		PC47S1100	1100 HALF	1100 HALF	1100-1125mm	656mm	455mm	
8		PC47S1200	1200 HALF	1200 HALF	1175-1200mm	708mm	492mm	

- Frames can be cut short to fit smaller sizes than adjustment range mentioned in above table.

These semi-frameless double corner sliding doors are perfect for corner installations, optimizing bathroom space. They feature centrally opening doors that slide smoothly for easy access and a spacious feel. The adjustable sliding mechanism ensures a precise fit and smooth operation. A watertight seal prevents leaks and water damage, while the high-quality construction guarantees long-lasting performance and durability.







Semi-Frame Single Sliding Door

TECHNICAL PARAMETERS												
NO	PICTURES	NAME	SKU	SIZES(MM)	CH	BL	BN	GM	LG	MIN OPEN SIZE	MAX OPEN SIZE	REMARKS
1		Front Door (Wall To Wall)	PC07DW2W920	920-1000	●	●	●	●	●	400mm	430mm	Knob Handle
2			PC07DW2W1000	1000-1100	●	●	●	●	●	410mm	538mm	Knob Handle
3			PC07DW2W1100	1100-1240	●	●	●	●	●	420mm	500mm	Knob Handle
4			PC07DW2W1200	1200-1350	●	●	●	●	●	430mm	571mm	Square Handle
5			PC07DW2W1350	1350-1530	●	●	●	●	●	500mm	646mm	Square Handle
7			PC07DW2W1500	1500-1750	●	●	●	●	●	530mm	766mm	Square Handle
8		Return Panel	PC025RP800	790-810	●	●	-	-	-			
9			PC025RP850	840-860	●	●	-	-	-			
10			PC025RP900	890-910	●	●	●	●	●			
11			PC025RP950	940-960	●	●	-	-	-			
12			PC025RP1000	990-1010	●	●	●	●	●			Return Panel Only
13			PC025RP1050	1040-1060	●	●	-	-	-			
14			PC025RP1100	1090-1110	●	●	-	-	-			
15			PC025RP1150	1140-1160	●	●	-	-	-			
16			PC025RP1200	1190-1210	●	●	-	-	-			



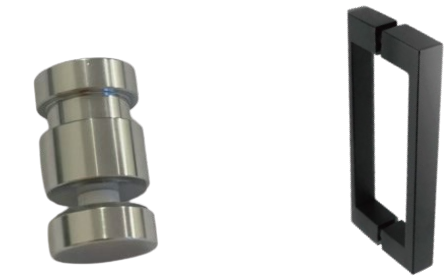
The Wall to Wall (W2W) feature is standard in this model, with sizes ranging from 920mm to 1750mm, eliminating the need for customization. For W2W sizes below 1200mm, a knob handle is provided to allow a wider entrance. Sizes above 1200mm are equipped with a square handle for an enhanced aesthetic match with the shower screen. The watertight seal keeps water contained within the shower, preventing leaks and damage. Made from premium materials, this model ensures long-lasting durability and reliable performance.

Features:

- Made from Australian Standard 6mm tempered glass and #6463 High quality Aluminum materials
- Frame finish colors are available with Chrome, Matt Black, Brush Nickel, Gun Metal and Light Gold
- To allow proper entrance space, Smaller sizes will come with Knob, more details refer to Technical Paramaters
- Standard Height 2000mm H
- Nano- Coating is optional with extra charge (Treatment is applied on one-side glass)
- Can be customized to fit different shower sizes and shapes
- Can be installed as L Shape or Wall to Wall/Inline Direction  
Wall channel allows 20mm for out-of-plumb wall adjustment
- Reversible installation is available



NC Series Knob NC Series Handle  
For Brush Nickel, Gun Metal, Light Gold Frames



PC Series Knob PC Series Handle  
For Chrome, Black Frames

Semi-frameless single sliding doors are ideal for bathrooms with limited space, offering an economical shower option. They can be installed with a return panel to create an L-shaped shower screen. Reversible installation allowing you to fit them from left to right or right to left, depending on your bathroom design.







NC046

Semi-Frame Curved Sliding Door



PC036

Semi-Frame Triple Sliding Door

- Made from Australian Standard tempered glass and #6463 High Quality Aluminum materials
- Frame finishes colors available with Chrome
- Standard Height 2000mm H
- Nano- Coating is optional with extra charge (Treatment is applied on one-side glass)
- Wall channel allows 20mm for out-of-plumb wall adjustment
- Reversible installation is available

#### Features:

- Made from Australian Standard 6mm tempered glass and #6463 High Quality Aluminum materials
- Frame finishes colors available with Chrome
- Standard Height 2000mm H
- Nano- Coating is optional with extra charge (Treatment is applied on one-side glass)
- Wall channel allows 20mm for out-of-plumb wall adjustment
- Reversible installation is available



Chrome



Matt Black

#### TECHNICAL PARAMETERS

NO	PICTURES	NAME	SKU	SIZES(MM)	CH	BL	ENTRANCE SIZES				REMARKS
1		Curved	NC046800	800*800	●	●	500mm	-	-	-	Curved
2		Double	NC046900	900*900	●	●	550mm	-	-	-	Curved
3		Sliding Door	NC0461000	1000*1000	●	●	600mm	-	-	-	Curved



Matt Black



Chrome

#### TECHNICAL PARAMETERS

NO	PICTURES	NAME	SKU	SIZES(MM)	ENTRANCE SPACE(MM)	REMARKS
1		Front Door (Wall To Wall)	PC036W2W830	830-880	422mm	3 Panel Slider
2			PC036W2W880	880-930	452mm	3 Panel Slider
3			PC036W2W930	930-980	483mm	3 Panel Slider
4			PC036W2W980	980-1030	519mm	3 Panel Slider
5		Return Panel	PC025RP800	790-810	Return Panel Only	
6			PC025RP850	840-860		
7			PC025RP900	890-910		
8			PC025RP950	940-960		
9			PC025RP1000	990-1010		
10			PC025RP1050	1040-1060		
11			PC025RP1100	1090-1110		
12			PC025RP1150	1140-1160		
13			PC025RP1200	1190-1210		



PCH47S

Semi-frame Horizontal  
Double Sliding Door



PC Series Knob



Features:

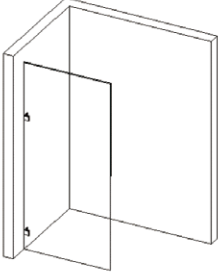
- Made from Australian Standard tempered glass and #6463 High Quality Aluminum materials
- Frame finishes colors available with Chrome, Black
- Nano- Coating is optional with extra charge (Treatment is applied on one-side glass)
- Different handles are applied for small sizes due to entrance limits
- Wall channel allows 20mm for out-of-plumb wall adjustment
- Reversible installation is available

TECHNICAL PARAMETERS								
NO	PICTURES	NAME	SKU	SIZES(MM)	FITTINGS COLORS		ENTRANCE SIZES	REMARKS
					CH	BL		
1		Front Door (Wall To Wall)	PCH47S1400	1400-1500	●	●	517mm	● Australian Standard 6mm Clear Tempered Toughen Glass  ● 20mm Adjustment allowance for un-straight walls  ● Standard height is 2000mm H
2			PCH47S1500	1500-1600	●	●	567mm	
3			PCH47S1600	1600-1700	●	●	617mm	
4			PCH47S1700	1700-1800	●	●	667mm	
5			PCH47S1800	1800-1900	●	●	717mm	
6			PCH47S1900	1900-2000	●	●	767mm	
7			PCH47S2000	2000-2100	●	●	807mm	
8			PCH47S2100	2100-2250	●	●	832mm	
9		Return Panel	PC025RP800	790-810	●	●	—	
10			PC025RP850	840-860	●	●	—	
11			PC025RP900	890-910	●	●	—	
12			PC025RP950	940-960	●	●	—	
13			PC025RP1000	990-1010	●	●	—	
14			PC025RP1050	1040-1060	●	●	—	
15			PC025RP1100	1090-1110	●	●	—	
16			PC025RP1150	1140-1160	●	●	—	
17			PC025RP1200	1190-1210	●	●	—	



“Single Panel  
Collection”



TECHNICAL PARAMETERS						
NO	PICTURES	SKU	STANDARD SIZES(MM)			
1	 <div>CVP007SG + Sizes Eg: CVP007SG900</div>		200mm	765mm	890mm	1180mm
2			250mm	770mm	895mm	1190mm
3			300mm	775mm	900mm	1200mm
4			330mm	780mm	905mm	1030mm
5			350mm	785mm	910mm	1035mm
6			380mm	790mm	915mm	1040mm
7			400mm	795mm	920mm	1045mm
8			430mm	800mm	925mm	1050mm
9			450mm	805mm	930mm	1055mm
10			480mm	810mm	935mm	1060mm
11			500mm	815mm	940mm	1065mm
12			530mm	820mm	945mm	1070mm
13			550mm	825mm	950mm	1075mm
14			580mm	830mm	955mm	1080mm
15			600mm	835mm	960mm	1085mm
16			630mm	840mm	965mm	1090mm
17			650mm	845mm	970mm	1095mm
18			680mm	850mm	975mm	1100mm
19			700mm	855mm	980mm	1110mm
20			710mm	860mm	985mm	1120mm
21			720mm	865mm	990mm	1130mm
22			730mm	870mm	995mm	1140mm
23			740mm	875mm	1000mm	1150mm
24			750mm	880mm	1005mm	1160mm
25			760mm	885mm	1010mm	1170mm

- Australian Standard 10mm Clear Tempered Glass
  - Nano- Coating is optional with extra charge (Treatment is applied on one-side glass)
  - High Quality Brass Wall brackets with 6 color options
  - Sizes larger than 1200mm Width will be with extra delivery cost and handling cost
  - Standard Height 2000mm
- Customized Glass types and sizes is acceptable
  - Customized Glass type option:
    - Clear Glass
    - Ultra Clear Glass
    - Tinted Grey Glass
    - Fluted Glass
    - Frosted/Matelux Glass



**CVP007**

Clear Glass  
Single Panel WB

- **Chrome**

**Matt Black**

**Brushed Nickel**
- **Gun Metal**

**Brushed Gold**

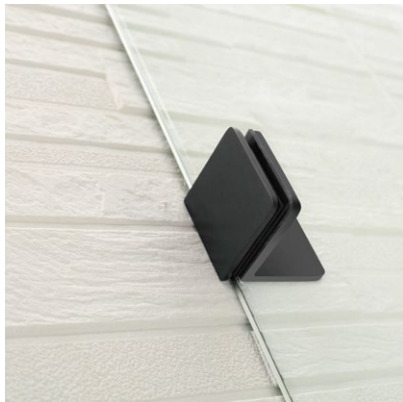
**Light Gold**







Matt Black



Chrome



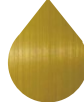
Matt Black



Brushed Nickel



Gun Metal



Brushed Gold



Light Gold

TECHNICAL PARAMETERS						
NO	PICTURES	NAME	SKU	SIZES(MM)	GLASS THICKNESS	REMARKS
1		Tined Glass Single Panel	CVP007GSG900	900mm	10mm Tinted Glass	<ul style="list-style-type: none"><li>● Australian Standard 10mm Tinted Grey Tempered Toughen Glass</li><li>● Featured with grey glass</li><li>● Default High Quality Brass Wall brackets is Black</li><li>● Standard Height 2000mm</li><li>● Nano- Coating is optional with extra charge (Treatment is applied on one-side glass)</li><li>● Customized Glass size is acceptable</li></ul>
2			CVP007GSG1000	1000mm	10mm Tinted Glass	
3			CVP007GSG1200	1200mm	10mm Tinted Glass	

TECHNICAL PARAMETERS						
NO	PICTURES	NAME	SKU	SIZES(MM)	GLASS THICKNESS	REMARKS
1		Frosted Glass Single Panel	CVP01FSG900	900mm	10mm Frosted Glass	<ul style="list-style-type: none"><li>● Australian Standard Frosted 10mm Tempered Toughen Glass</li><li>● High Quality Brass Wall brackets with 6 color options</li><li>● Standard Height 2000mm</li><li>● Nano- Coating is optional with extra charge (Treatment is applied on one-side glass)</li><li>● Customized Glass types and sizes is acceptable</li></ul>
2			CVP01FSG1000	1000mm	10mm Frosted Glass	
3			CVP01FSG1200	1200mm	10mm Frosted Glass	



CVP011

Wall channel  
Single Panel WC



CVP012

Gradient Glass  
Single Panel WC



Chrome



Matt Black



Brushed Nickel



Gun Metal



Brushed Gold



Light Gold

Features:

- Made from Australian Standard 10mm tempered glass and #304 stainless steel fitting materials
- Fitting finishes colors available with 6 colors refer to Color Option
- Nano-coating is optional for all glass with extra charge
- Normal Wall channel allows 10mm and 45mm wall channels allows 20mm for out-of-plumb wall adjustment
- Reversible installation is available

Features:

- Made from Australian Standard tempered glass and High quality aluminum wall channel fitting materials
- Default Wall channel color is Black
- Nano-coating is optional for all glass with extra charge



Matt Black



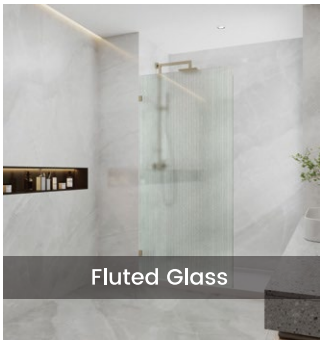
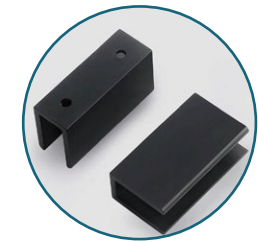
TECHNICAL PARAMETERS						
NO	PICTURES	NAME	SKU	SIZES(MM)	GLASS THICKNESS	REMARKS
1		Wall Channel	CVP011SG900	900mm	10mm Clear Glass	<ul style="list-style-type: none"><li>• Australian Standard Clear Tempered Toughen Glass</li><li>• #304 Staineless Steel Wall Channel with 6 color options</li><li>• Standard Height 2000mm</li><li>• Customized Glass types and sizes are acceptable</li><li>• Customized Glass type option:<ul style="list-style-type: none"><li>- Clear Glass</li><li>- Ultra Clear Glass</li><li>- Tinted Grey Glass</li><li>- Fluted Glass</li><li>- Frosted/Matelux</li></ul></li></ul>
2		Single Panel	CVP011SG1000	1000mm	10mm Clear Glass	
3			CVP011SG1200	1200mm	10mm Clear Glass	

TECHNICAL PARAMETERS						
NO	PICTURES	NAME	SKU	SIZES(MM)	GLASS THICKNESS	REMARKS
1		Black Gradient Glass Single Panel	CVP012SG900	900mm	10mm Black Gradient Glass	<ul style="list-style-type: none"><li>• Australian Standard 10mm Gradient Black Tempered Toughen Glass</li><li>• High quality Aluminum Black Wall Channel</li><li>• Optional support bar is provided in package to provide extra support if required</li><li>• Standard height is 2000mm</li><li>• Customization is Not available</li></ul>
2			CVP012SG1000	1000mm	10mm Black Gradient Glass	
3			CVP012SG1200	1200mm	10mm Black Gradient Glass	



CVP017A  
CVP017NL  
CVP017NR

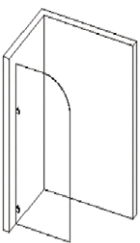

Curved Corner  
Single Panel UB



CVP018

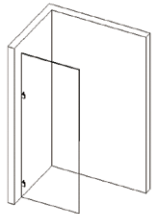
Fluted Glass  
Single Panel WB

-   
Chrome
-   
Matt Black
-   
Brushed Nickel
-   
Gun Metal
-   
Brushed Gold
-   
Light Gold

TECHNICAL PARAMETERS						
NO	PICTURES	NAME	SKU	SIZES (MM)	FEATURES	REMARKS
1		Curved Corner Single Panel	CVP017ASG800	800mm	Can be installed both ways (Only if with Nano coating, need to specify it will be installed in which direction)	<ul style="list-style-type: none"><li>Australian Standard 10mm Tempered Toughen Glass</li><li>Featured with curved corner edge on the top of glass</li><li>#304 Stainless Steel U brackets with 6 color options</li><li>Standard Height 2100mm</li><li>Customized Glass types and sizes are acceptable</li><li>Glass type option:<ul style="list-style-type: none"><li>Clear Glass</li><li>Ultra Clear Glass</li><li>Tinted Grey Glass</li><li>Fluted Glass</li><li>Frosted/Matelux</li></ul></li></ul>
2			CVP017ASG900	900mm		
3			CVP017ASG1000	1000mm		
4			CVP017ASG1100	1100mm		
5			CVP017ASG1200	1200mm		
6			CVP017NLSG800	800mm		
7		Curved Glass Corner Single Panel (Fluted / Narrowline Glass)	CVP017NLSG900	900mm	Can be installed in Left side wall when face to the shower panel from outside	
8			CVP017NLSG1000	1000mm		
9			CVP017NLSG1100	1100mm		
10			CVP017NLSG1200	1200mm		
11			CVP017NRSG800	800mm	Can be installed in Right side wall when face to the shower panel from outside	
12			CVP017NRSG900	900mm		
13			CVP017NRSG1000	1000mm		
14			CVP017NRSG1100	1100mm		
15			CVP017NRSG1200	1200mm		



-   
Chrome
-   
Matt Black
-   
Brushed Nickel
-   
Gun Metal
-   
Brushed Gold
-   
Light Gold

TECHNICAL PARAMETERS						
NO	PICTURES	NAME	SKU	SIZES(MM)	GLASS THICKNESS	REMARKS
1		Fluted Glass Single Panel	CVP018SG800	800mm	10mm Fluted Glass	<ul style="list-style-type: none"><li>Australian Standard 10mm Tempered Toughen Glass</li><li>Featured with Fluted/ Narrowline glass</li><li>High Quality Brass Wall brackets with 6 color options</li><li>Standard Height 2000mm H</li><li>Customized Glass sizes is acceptable</li></ul>
2			CVP018SG900	900mm	10mm Fluted Glass	
3			CVP018SG1000	1000mm	10mm Fluted Glass	
4			CVP018SG1100	1100mm	10mm Fluted Glass	
5			CVP018SG1200	1200mm	10mm Fluted Glass	





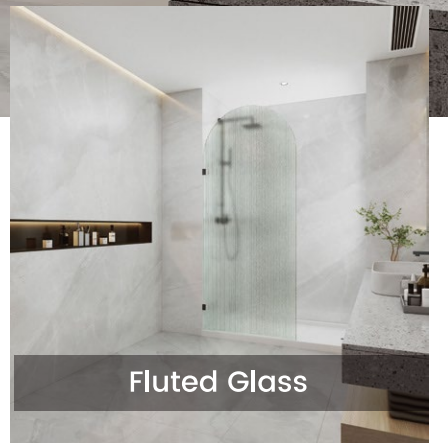
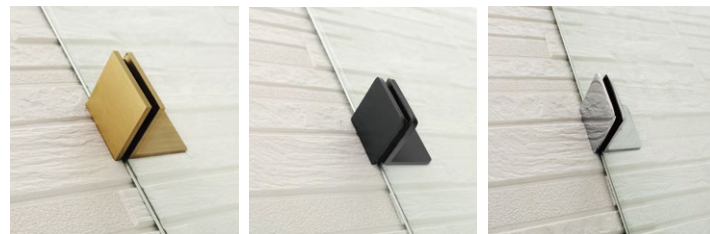
**CVP019**

Bend Glass Single Panel WB



**CVP022A  
CVP022N**

Top Arch Single  
Panel UB



Fluted Glass

#### TECHNICAL PARAMETERS

NO	PICTURES	NAME	SKU	SIZES(MM)	GLASS THICKNESS	REMARKS
1		Bend Glass	CVP019SG900	900*2100mm	10mm Clear Glass	<ul style="list-style-type: none"><li>• Australian Standard 10mm Clear Tempered Toughen Glass</li><li>• Featured with Bending Glass body</li><li>• High Quality Brass Wall brackets with 6 color options</li><li>• Standard height is 2100mm</li><li>• Customization is Not available</li></ul>
2		Single Panel	CVP019SG1000	1000*2100mm	10mm Clear Glass	
3			CVP019SG1100	1100*2100mm	10mm Clear Glass	

#### TECHNICAL PARAMETERS

NO	PICTURES	NAME	SKU	SIZES(MM)	GLASS THICKNESS	REMARKS
1		Arch Top Glass	CVP022ASG900	900*2200mm	10mm Clear Glass	<ul style="list-style-type: none"><li>• Australian Standard 10mm Tempered Toughen Glass</li><li>• Featured with Arch shape on the top of glass</li><li>• #304 Stainless Steel U brackets with 6 color options</li><li>• Standard Height 2200mm</li><li>• Customized Glass types and sizes are acceptable</li><li>• Glass type option:<ul style="list-style-type: none"><li>- Clear Glass</li><li>- Ultra Clear Glass</li><li>- Tinted Grey Glass</li><li>- Fluted Glass</li><li>- Frosted/Matlux</li></ul></li></ul>
2		Single Panel	CVP022ASG1000	1000*2200mm	10mm Clear Glass	
3		Arch Top Glass	CVP022NSG900	900*2200mm	10mm Fluted Narrowline Glass	
4		Single Panel (Fluted/Narrowline Glass)	CVP022NSG1000	1000*2200mm	10mm Fluted Narrowline Glass	



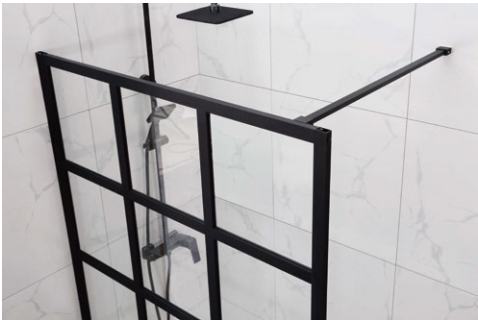


# “Feature Panels Collection”



NC006

15 Printed Grills  
Glass Panel



Matt Black

## TECHNICAL PARAMETERS

NO	PICTURES	NAME	SKU	SIZES(MM)	GLASS THICKNESS	REMARKS
1		15 Printed Grills Glass Panel	NC006SG1200	1200mm	6mm Printed Glass	<ul style="list-style-type: none"><li>• Australian Standard 6mm Tempered Toughen Glass with Black Printing Grills</li><li>• Featured with 15 Black Printing Grills</li><li>• 1000mm Support bar is included</li><li>• Standard Height 2000mm</li><li>• Customization is Not available</li></ul>





NC001

Clear Glass Panel  
with Support Bar



NC005

Clear Glass Panel  
without Support Bar



Light Gold



Matt Black



#### TECHNICAL PARAMETERS

NO	PICTURES	NAME	SKU	SIZES(MM)	GLASS THICKNESS	REMARKS
1		Clear Glass Panel with Support Bar	NC001SG900	900mm	6mm Clear Glass	<ul style="list-style-type: none"><li>• Australian Standard 6mm Clear Tempered Toughen Glass</li><li>• Featured with fully framed single panel and support bar</li><li>• 1000mm Support bar is included</li><li>• Standard height is 2000mm</li></ul>
2			NC001SG1000	1000mm	6mm Clear Glass	
3			NC001SG1200	1200mm	6mm Clear Glass	



Matt Black

#### TECHNICAL PARAMETERS

NO	PICTURES	NAME	SKU	SIZES(MM)	GLASS THICKNESS	REMARKS
1		Clear Glass Panel without Support Bar	NC005SG900	900*2100mm	10mm Clear Glass	<ul style="list-style-type: none"><li>• Australian Standard 10mm Clear Tempered Toughen Glass with Black frame</li><li>• Featured with fully framed single panel</li><li>• Standard height is 2100mm</li><li>• No Support bar is included</li></ul>
2			NC005SG1000	1000*2100mm	10mm Clear Glass	
3			NC005SG1200	1200*2100mm	10mm Clear Glass	





NC002

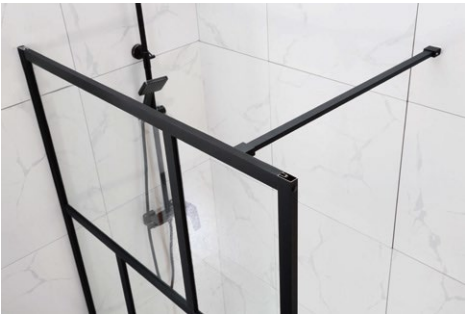
8 Printed Grills  
Glass Panel

NC003

6 Printed Grills  
Glass Panel



Matt Black



Matt Black

TECHNICAL PARAMETERS					
NO	PICTURES	NAME	SKU	SIZES(MM)	REMARKS
1		8 Printed Grills Glass Panel	NC002SG900	900mm	<ul style="list-style-type: none"><li>• Australian Standard 6mm Clear Tempered Toughen Glass with Black Printing Grills</li><li>• Featured with 8 Black Printing Grills</li><li>• 1000mm Support bar is included</li><li>• Standard height is 2000mm</li></ul>
2			NC002SG1000	1000mm	

TECHNICAL PARAMETERS						
NO	PICTURES	NAME	SKU	SIZES(MM)	GLASS THICKNESS	REMARKS
1		6 Printed Grills Glass Panel	NC003SG1000	1000mm	6mm Printed Glass	<ul style="list-style-type: none"><li>• Australian Standard 6mm Tempered Toughen Glass with Black Printing Grills</li><li>• Featured with 6 Irregular Black Printing Grills</li><li>• 1000mm Support bar is included</li><li>• Standard height is 2000mm</li></ul>
2			NC003SG1100	1100mm	6mm Printed Glass	





# “Bathtub Screen Collection”



**CVP032**

Single Sliding  
Bathtub Screen



**Chrome**



**Matt Black**



**Brushed Nickel**



**Gun Metal**



**Brushed Gold**





**Light Gold**

## Features:

- Made from Australian Standard 10mm tempered glass and #304 stainless steel fitting materials
- Fitting finishes colors available with 6 colors refer to Color Option
- Nano-coating is optional for all glass with extra charge
- Reversible installation is available

## TECHNICAL PARAMETERS

NO	PICTURES	NAME	SKU	SIZES (MM)	DOOR (MM)	FIX (MM)	MIN OPEN SPACE	Max OPEN SPACE	REMARKS
1		Bathtub Single Sliding Door	CVP032BS1450	1450-1550mm	819mm	742mm	620mm	720mm	
2		Bathtub Single Sliding Door	CVP032BS1650	1650-1800mm	944mm	867mm	696mm	846mm	

- Standard Height 1600mm
- Customized Glass types and sizes are acceptable
- Customized Glass type option:
  - Clear Glass
  - Ultra Clear Glass
  - Tinted Grey Glass
  - Fluted Glass
  - Frosted/Matelux





  
**Matt Black**



  
**Chrome**

  
**Matt Black**

  
**Brushed Nickel**


---



  
**Gun Metal**

  
**Brushed Gold**

  
**Light Gold**



TECHNICAL PARAMETERS						
NOPICTURES		NAME	SKU	SIZES(MM)	PANELS	REMARKS
1		Grills Fixed	NC008BS700	700*1500mm	8mm Printed Glass	<ul style="list-style-type: none"><li>● Australian Standard 8mm Printed Tempered Toughen Glass</li><li>● Standard Height 1500mm</li><li>● Customization is NOT acceptable</li></ul>
2		Bathtub Screen	NC008BS800	800*1500mm	8mm Printed Glass	

TECHNICAL PARAMETERS						
NO	PICTURES	NAME	SKU	SIZES(MM)	GLASS THICKNESS	REMARKS
1		Fixed Bathtub Screen	CVP008BS750	750*1500mm	10mm Clear Glass	<ul style="list-style-type: none"><li>● Australian Standard Tempered Toughen Glass</li><li>● High Quality Brass Wall brackets with 6 color options</li><li>● Standard Height 1500mm</li><li>● Customized Glass types and sizes are acceptable</li><li>● Customized Glass type option:<ul style="list-style-type: none"><li>- Clear Glass</li><li>- Ultra Clear Glass</li><li>- Tinted Grey Glass</li><li>- Fluted Glass</li><li>- Frosted/Matelux</li></ul></li></ul>
2		Fixed Bathtub Screen	CVP008BS900	900*1500mm	10mm Clear Glass	





NC009

Single Swing Bathtub Screen



NC010

Double Swing Bathtub Screen



Chrome



Matt Black



Chrome



Matt Black



TECHNICAL PARAMETERS

NO	PICTURES	NAME	SKU	SIZES(MM)	GLASS THICKNESS	REMARKS
1		Swing Bathtub Screen	NC009BS750	750*1500mm	6mm Clear Glass	<ul style="list-style-type: none"><li>Australian Standard Tempered Toughen Glass</li><li>Standard Height 1500mm</li><li>Customization is NOT available</li></ul>
2			NC009BS900	900*1500mm	6mm Clear Glass	

TECHNICAL PARAMETERS

NO	PICTURES	NAME	SKU	SIZES(MM)	GLASS THICKNESS	REMARKS
1		Double Swing Bathtub Screen	NC010BS1000	1000*1500mm	6mm Clear Glass	<ul style="list-style-type: none"><li>Australian Standard Tempered Toughen Glass</li><li>Standard Height 1500mm</li><li>Customization is NOT available</li></ul>
2			NC010BS1200	1200*1500mm	6mm Clear Glass	



CVP006

Double Hinged  
Bathtub Screen



- 

Chrome
- 

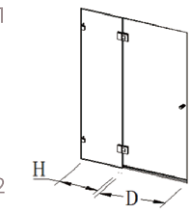
Matt Black
- 

Brushed Nickel
- 

Gun Metal
- 

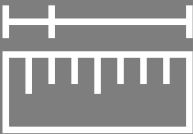
Brushed Gold
- 

Light Gold

TECHNICAL PARAMETERS						
NO	PICTURES	NAME	SKU	SIZES(MM)	GLASS THICKNESS	REMARKS
1		Bathtub Single Hinge Door	CVP006BS850	850*1500mm (500H+350D)	10mm Clear Glass	<ul style="list-style-type: none"><li>● Australian Standard Tempered Toughened Glass</li><li>● Hinge-Swing bathtub screen</li><li>● High Quality Brass Hinge &amp; Wall brackets with 6 color options</li><li>● Standard Height 1500mm</li><li>● Customized Glass types and sizes are acceptable</li><li>● Customized Glass type option:<ul style="list-style-type: none"><li>- Clear Glass</li><li>- Ultra Clear Glass</li><li>- Tinted Grey Glass</li><li>- Fluted Glass</li><li>- Frosted/Matelux</li></ul></li></ul>
2			CVP006BS1000	1000*1500mm (500H+500D)	10mm Clear Glass	

IMPORTANCE

- Precise measurements are necessary. When customers measure the floor, the area should be ready for installation, with tiles and plumbing completed.
- If there is an existing shower screen, it should be removed before measuring for a new one. It's better to measure after removal. Measure the potential installation space as precisely as possible. A measuring tape or laser measurer shall be used.
- Draw a floor plan and place all vanities, toilets, and tubs with their dimensions to see how much space is left for the shower screen.
- Examine the space and determine the most practical location for the shower. Consider how the shower door will operate, ensuring it won't hit anything if it opens outwards.



MEASUREMENT



PRODUCT  
SELECTION

- Shower Screen Collections: Choose from Frameless, Framed, Single Panel, or Bath Screen.
  - Shower Screen Opening Types: Sliding or Hinge.
  - Shower Screen Models: Specify the model number and choose between Wall-to-Wall or L-shape configurations.
  - Shower Screen Fitting Colors: Choose from 6 available colors.
  - Bathroom Space Sizes: Standard or Customized.
- Additional Services

  - ✓ Nano-coating Services: If yes, please specify the installation direction. Treatment will only be applied on the side of the shower area.
  - ✓ Delivery Services: If yes, please provide contact details.
  - ✓ Installation Services: If yes, please provide contact details.

For any goods received, retailers MUST carefully double-check the item's model, size, color, and condition to ensure you are receiving the correct and well-conditioned items. If there are any discrepancies or damages, please contact us immediately for correction. If any obviously incorrect items are delivered and the customer proceeds with installation, Covey Australia will charge for the damaged product cost and will not be responsible for the installation costs involved. Covey Australia will arrange for re-delivery to the retailer's store but will not be responsible for any re-delivery or courier fees to end-user customers.

This must be done within a 7-day period of identifying the fault, detailing a description of the fault, with details of how and when it occurred. Provide photos if possible, as well as a copy of the proof of purchase and installation provided by Covey Australia, if directly shipped by courier of Covey Australia. For any item shipped by retailers' appointed courier, Covey Australia will not be responsible for any glass or hardware damage or loss during transportation. Retailers shall claim loss from relevant courier company. The Covey Australia retailer or Covey Australia will assess whether the lodged claim is covered by the product warranty and proceed with the claim process if applicable.



ACCEPTANCE  
CHECK



DISCLAIMER

The information provided is representative of the actual products available at the time of printing. The specifications depicted are subject to change without notice as we continuously develop our products.

Given that the shower screen is made of glass, it must be handled properly and carefully. Any damages incurred during installation will be the responsibility of the relevant installer, and warranties will be waived.

All products MUST be installed by a professional glazier with a valid glazier license. If installed by non-authorized installers, warranties will be waived.